

Gutter Guard Product Information



Photo Courtesy Of Boral Roofing



TABLE OF CONTENTS:

- 1) FRONT COVER
- 2) TABLE OF CONTENTS
- 3) ABOUT US
- 4) GUTTER MESH PRODUCT RANGE
- 5) EMBER GUARD/FINE WIRE MESH RANGE
- 6) GUTTER GUARD ACCESSORIES
- 7) SUMMARY OF COMPLIANCE WITH AS 3959-2018
- 8) TILE ROOF KITS
- 9) CORRO ROOF KITS
- 10) TRIMDEK ROOF KITS
- 11) NON STANDARD KITS
- 12) INSTALLATION PROCEDURE
- 13) INSTALLATION IMAGES
- 14) FEATURES AND BENEFITS
- 15) COLOUR RANGE

ABOUT US:

Karben Industries Pty Ltd is a proudly Australian owned and operated family company based on the Central Coast of New South Wales. Karben Industries offers a complete range of gutter guard products and accessories based on the award winning 'ski-slope' system, to both domestic and international markets.

STAFF:

Managing Director - Ben Stewart
Accounts Manager - Karen Stewart
Warehouse & Manufacturing Manager - Nathan Mezzino

Over time, Karben Industries has emerged as the industry leader. With combined industry experience of more than 40 years our support staff all share a common focus. "Unmatched quality and service" .

QUALITY:

With mesh products manufactured by Tapex, who is Australia's leading brand of industrial, construction and landscape products, we offer the highest quality materials available in the industry. Based in Sydney, the origins of their business trace back more than 130 years and we are proud to be associated with such an experienced and trusted brand.

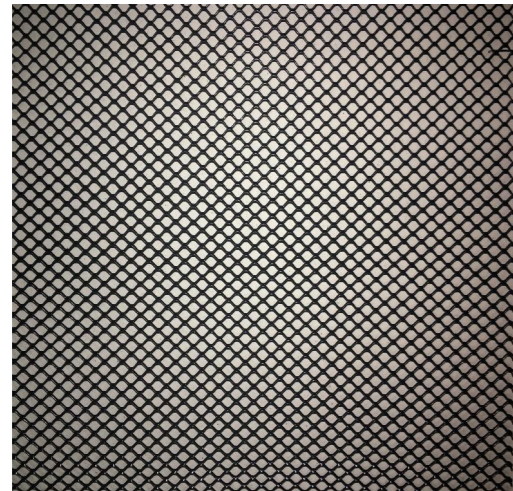
In a commitment to provide unmatched quality across the board, an investment in sheet metal machinery in 2012 enabled Karben Industries to bring in house the production of fitting accessories (trims and saddles). All of our components are produced using premium 0.55BMT Australian made BlueScope Colorbond® steel.

SERVICE:

All Karben Industries products are available individually or in convenient, ready to use kit form. Interstate orders received by 12pm, will be dispatched the same day. For Sydney Metropolitan, same day delivery is available for orders placed before 8:30am. Orders placed after 8:30am will be delivered the next day. Otherwise pickups are welcome from 8am till 5pm weekdays.

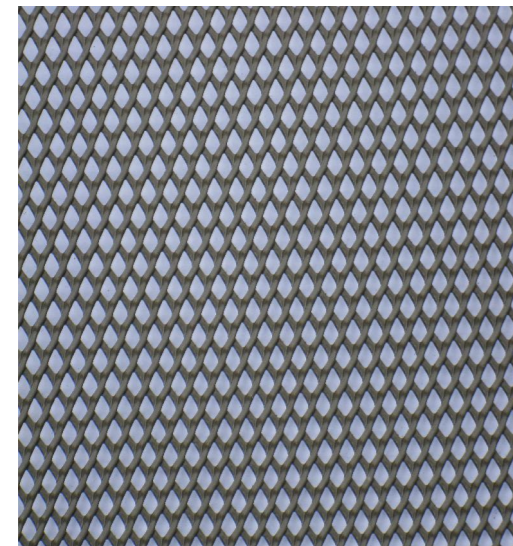
Our warehouse address is
Unit 1, 3 Palm Tree Road Wyong NSW 2259

GUTTER MESH PRODUCT RANGE :



Premium Aluminium Gutter Mesh

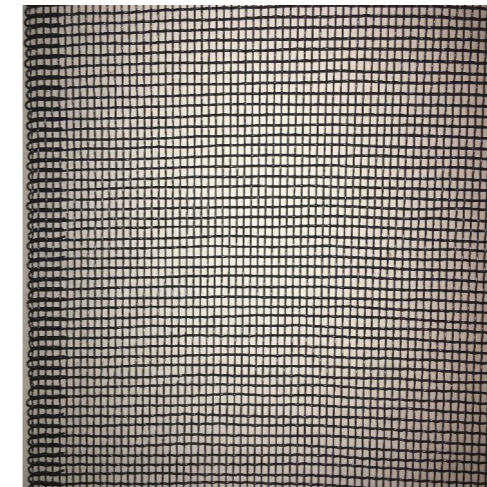
- Powder coated, expanded, commercial grade Aluminum
- Compatible with Colorbond®, Aluminium and Zinalume roof/gutters
- Aperture of 4mm x 3mm, strand width 1.0 mm, mesh weight 500 g/m²
- Manufactured in 1000mm x 50m continuous rolls
- Standard widths of 250, 500, 750 & 1000mm
- Sold by the metre
- Compliant with AS 3959-2018 "Construction of buildings in bushfire prone areas"
- Available in a range of colours



High Density Poly-Ethylene Gutter Mesh

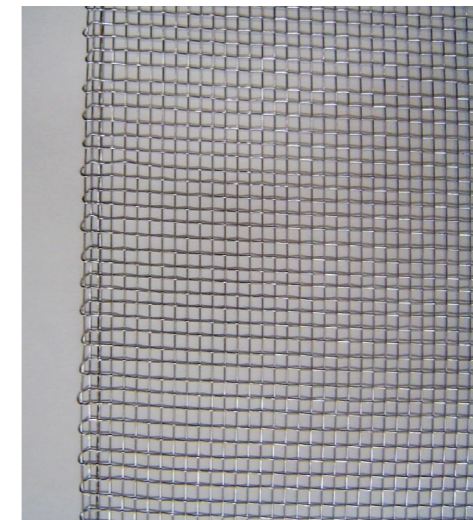
- 100% virgin High Density Poly-Ethylene
- UV stabilised material used in a range of commercial and domestic industries
- Compatible with all roof/gutter materials including copper and stainless steel
- Aperture of 4mm x 4mm, strand width 2mm, mesh weight of 650 g/m²
- Manufactured in 1000mm x 50m continuous rolls
- Standard widths of 250, 500, 750 & 1000mm
- Sold by the metre
- Available in a range of modern and traditional colours

EMBER GUARD & FINE WIRE MESH RANGE :



Woven Aluminium 1.9mm Ember Guard/ Gutter Guard

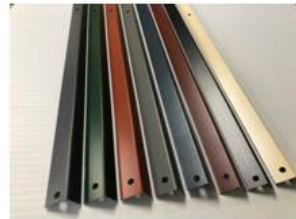
- Powder coated, woven, commercial grade Aluminium
- Aperture of 1.9mm x 1.9mm with locked edge
- Strand thickness 0.5mm
- Compliant with AS 3959-2018 "Building in bushfire prone areas"
- Suitable as gutter guard in BAL-12.5, BAL-19, BAL-29, BAL-40 & BAL FZ
- Suitable as ember guard in BAL-12.5, BAL-19, BAL-29
- Available in 250mm, 500mm and 1000mm widths
- Sold by the metre
- Manufactured in limited colour range.



Stainless Steel 1.9mm Ember Guard

- Marine grade-316 stainless steel woven mesh
- Aperture of 1.9mm x 1.9mm with selvedge edge
- Strand thickness 0.5mm
- Compliant with AS 3959-2018 "Building in bushfire prone areas"
- Suitable for use as ember guard BAL-12.5, BAL-19, BAL-29, BAL-40 & BAL FZ
- Available in 250mm, 500mm and 1000mm widths
- Sold by the metre
- *Separation will be required if contact with non-compatible metals occurs*

GUTTER GUARD ACCESSORIES:



Gutter Fixing Trim

- Manufactured using 0.55 BMT BlueScope Colorbond® Steel
- Dimensions - 10 x 15mm folded at 90 degrees
- Available in 1m lengths (supplied as standard in kits)
- Folded in press brake for unmatched consistency and quality
- Pre-drilled for increased usability
- Available in full Colorbond® colour range plus copper and stainless



Corrugated (Corro) Roof Fixing Saddles

- Manufactured using 0.55 BMT BlueScope Colorbond® Steel
- Designed to match all major brands corrugated roof sheeting
- Pre-drilled for increased usability
- Available in full Colorbond® colour range
- Gutter install requires installation to every second rib (7 per metre)
- Valley installation requires installation on every rib (18 per metre)
- Sold individually



Trimdek Roof Fixing Saddles

- Manufactured using 0.55 BMT BlueScope Colorbond® Steel
- Designed to match all major brands trimdek roof sheeting
- Pre-drilled for increased usability
- Available in full Colorbond® colour range
- Gutter install requires installation to every rib (6 per metre)
- Valley installation requires installation on every rib (14 per metre)
- Sold individually



Screws

- 12mm Self drilling screws (8x18x12)
- 15mm Stitching screws
- AS 3566 Class 4/B8 coating
- Warranty up to 30 years (dependant on environment)
- Available in bags of 100 or boxes of 1000
- Supplied colour matched as standard in kits
- Available in full Colorbond® range of colours



Silicone

- For use with potable (drinking) water AS4020-1999
- 25 Year guarantee
- Permanently flexible +/- 25% joint movement capacity
- Suitable for tile and metal applications (neutral cure)
- Available in limited colour range
- Sold individually or by the box

SUMMARY OF OUR MESH PRODUCT'S COMPLIANCE WITH AS 3959-2018:

	Aluminium Gutter Mesh	HDPE (Poly) Gutter Mesh	1.9mm Aperture Aluminium Mesh	1.9mm Aperture Stainless Steel Mesh
Base Material	Commercial grade Aluminium	High Density Poly-ethylene	Commercial Grade Aluminium	Marine Grade 316 Stainless Steel
Aperture	3mm x 4mm	4.0mm x 4.0mm	1.9mm x 1.9mm	1.9mm x 1.9mm
Suitable as Gutter Guard				
BAL-12.5	✓	✗	✓	✓
BAL-19	✓	✗	✓	✓
BAL-29	✓	✗	✓	✓
BAL-40	✓	✗	✓	✓
BAL-FZ	✓	✗	✓	✓
Suitable as Ember Guard				
BAL-12.5	✗	✗	✓	✓
BAL-19	✗	✗	✓	✓
BAL-29	✗	✗	✓	✓
BAL-40	✗	✗	✗	✓
BAL-FZ	✗	✗	✗	✓



TILE ROOF KITS:

Gutter Kit



Items
Included



500mm Mesh



Gutter Fixing Trim



Screws To Suit

Valley Kit



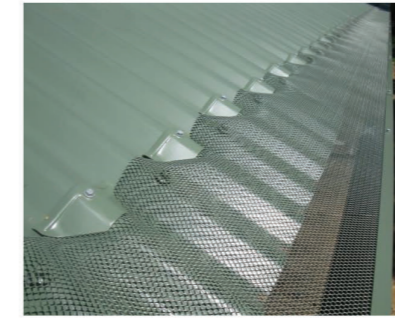
Items
Included



750mm Mesh

CORRO ROOF KITS:

Gutter Kit



Items
Included



250mm Mesh



Gutter Fixing Trim



Roof Fixing Saddles



Screws To Suit

Valley Kit



Items
Included



250mm Mesh



Roof Fixing Saddles



Screws To Suit

TRIMDEK ROOF KITS:

Gutter Kit



Items Included



250mm Mesh



Gutter Fixing Trim



Roof Fixing Saddles



Screws To Suit

Valley Kit



Items Included



250mm Mesh



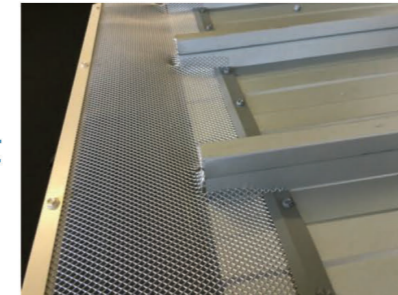
Roof Fixing Saddles



Screws To Suit

NON STANDARD KITS:

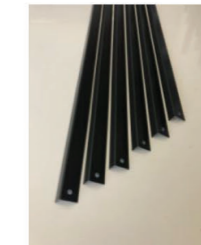
Klip - Lok Kit



Items Included



250mm Mesh



Gutter Fixing Trim

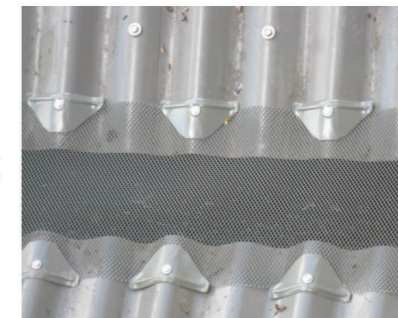


Roof Fixing Trim



Screws To Suit

Box Gutter Kit



Items Included



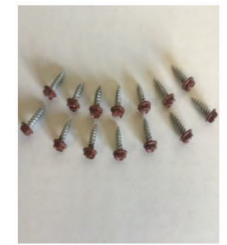
250/500mm Mesh



Roof Fixing Saddles



Roof Fixing Trim



Screws To Suit

*Items supplied will vary based on individual requirements

INSTALLATION PROCEDURE:



Installation of gutter guard is best done by a professional, however, if installing this system for the first time, please take care when working at heights. Secure all ladders and platforms, and if working from the roof, use a safety harness. Please observe all 'working at height regulations'.

The information provided on this page is a guide only. If unclear on any step, please contact us for further assistance. Installation videos available at www.karben.com.au

Step 1: Cleaning Gutters.

Nobody enjoys cleaning gutters, however it is important that all gutters, valleys and downpipes are thoroughly cleaned prior to installation. Your Gutter Guard technician should clean and clear all debris as part of the service.

Step 2: Attaching the mesh to the gutters.

After the gutters are clear, the mesh is secured to the gutter's outer edge using a Colorbond® trim and screws. Fasteners are recommended to be used at 250mm intervals.

Step 3: Fabricating the mesh to the roof profile.

Strategically positioned cuts are made in the guttermesh, coinciding with the contours of the roof. This fabricating process helps the mesh shape to the roof profile and ensures a professional finish.

Step 4: Attaching the mesh to the roof.

Once the mesh has been fabricated to your roof profile it is then attached to the roof. On tiled roofs the second row of tiles are lifted slightly and the gutter mesh tucked underneath. On a Colorbond® roof, specifically designed clips are screwed into the roof to hold the mesh down firmly against the corrugations.

Step 5: Covering the valleys.

Uniquely, our products are adaptable to roof valleys. The mesh extends over the valley gutters ensuring that from end to end and top to bottom your roof gutters are protected. See www.karben.com.au for more details.

Step 6: Securing around hips and gables.

The final step in the installation process is securing the mesh around the hips and gables. For tile roofs high quality roof and gutter silicone is used to fasten the mesh to the ridge capping so that no leaves can get in anywhere. For metal roofs, ensure mesh is fitted securely to capping and flashing where required.

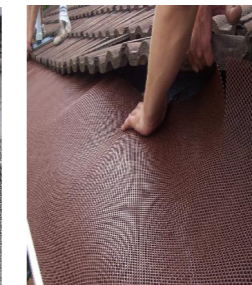
INSTALLATION IMAGES:



Step 2



Step 3



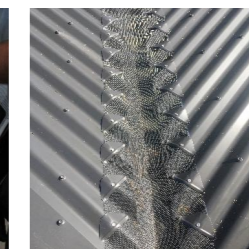
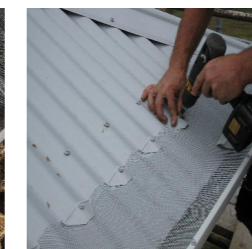
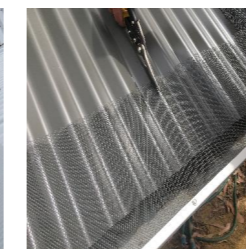
Step 4



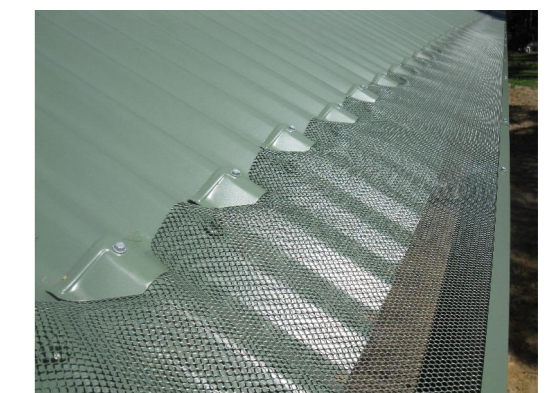
Step 5



Step 6



Installation Complete



FEATURES & BENEFITS:

- ✓ Sold by the metre – no wastage.
- ✓ Maximum length is 50m – eliminates joins.
- ✓ No need to stock, order just in time.
- ✓ Karben Guard Kits include mesh, trim, saddles and painted head screws as required.
- ✓ Components available separately.
- ✓ All screws are class 4 / B8 coated - painted head available.
- ✓ All accessories are made from BlueScope Colorbond® 0.55 BMT.
- ✓ 15 year warranty on Aluminium. 10 year warranty on Poly.
- ✓ Same day dispatch for orders placed by 12 Noon.
- ✓ Goods sent in sturdy, attractive packaging.
- ✓ Point of sale brochures, signs and displays available.



KARBEN GUARD

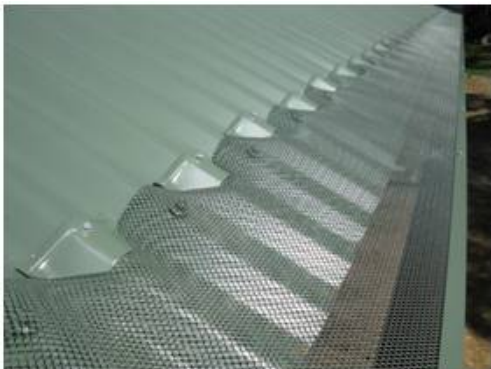
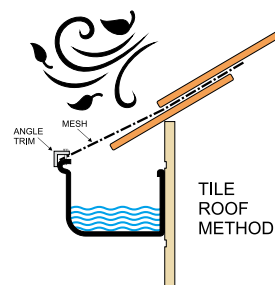
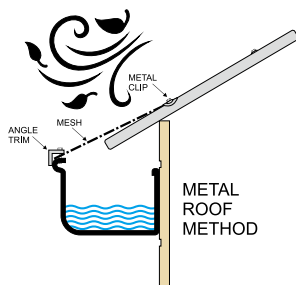


COLOUR RANGE:

		Standard Aluminium Mesh	1.9mm Woven Aluminium Mesh	HDPE (Poly) Mesh
	Basalt	✓		
	Classic Cream	✓		
	Cottage Green	✓		✓
	Cove	✓		
	Dark Brown	✓		
	Deep Ocean	✓		
	Dune	✓		
	Evening Haze	✓		
	Gully	✓		
	Headland	✓		
	Ironstone	✓		✓
	Jasper	✓	✓	✓
	Mangrove	✓		
	Monument	✓	✓	✓
	Manor Red	✓	✓	✓
	Night Sky	✓		✓
	Paperbark	✓		✓
	Pale Eucalypt	✓		
	Shale Grey	✓	✓	✓
	Surfmist	✓		
	Terrain	✓		
	Terracotta	✓		✓
	Vincent Brown			✓
	Wallaby	✓		
	Woodland Grey	✓	✓	✓
	Wilderness			✓
	Windspray	✓		
	Mill Finish	✓		



KARBEN GUARD



Unit 1/3 Palm Tree Road Wyong NSW 2259

p: 02 4393 3166

f: 02 4393 3266

e: info@karben.com.au

www.karben.com.au